



MAKE BETTER USE OF YOUR RESOURCES: FOCUS ATTENTION ON SPECIFIC AREAS OF INTEREST
 → Integrate your data for the most effective Safety Treatment Management Program possible.

ITIS' OnSafety™ Safety Treatment Manager (STM) helps state and local agencies focus resources on the locations that most need attention, helping to optimize spending on roadway safety. With the OnSafety™ STM, you can:

Manage the list of roadway locations that deserve attention.

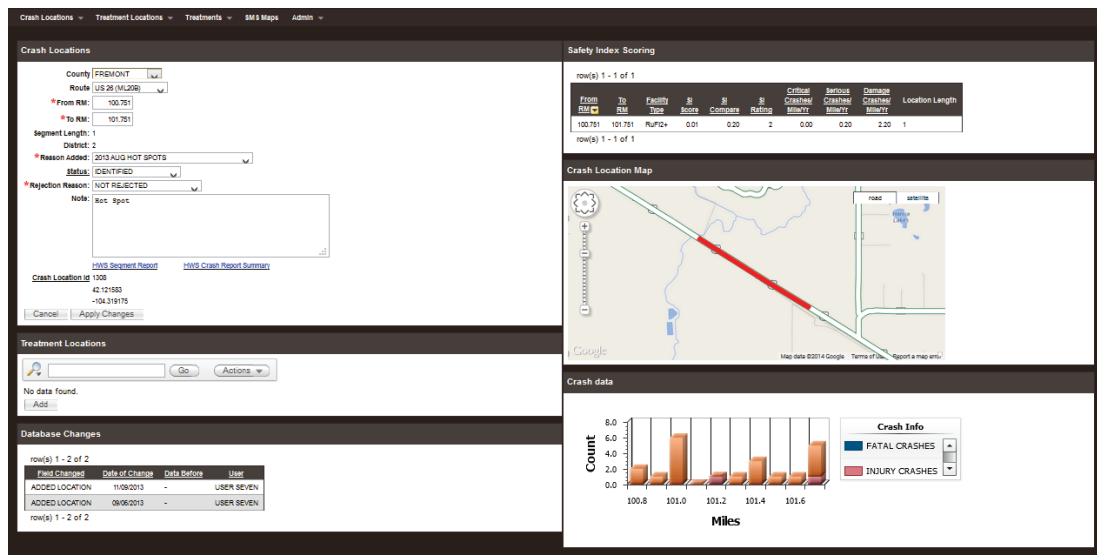
- These locations may be identified through safety studies, reported by the public, etc.
- Locations of interest can be prioritized by crash numbers (counts, severities, rates), or by risk, and/or applying the Highway Safety Manual predictive method.

Select appropriate safety counter-measures to consider for each location.

- Counter-measure selection is supported with information on relative severity and types of crashes occurring, in addition to other information available about the location.
- Your agency's approved list of counter-measures, with their lifecycle costs and crash modification factors, makes selection easy.
- Immediate feedback is given on the cost effectiveness of each potential counter-measure.

Manage the list of recommended safety treatments for your network.

- Prioritize safety treatments by cost effectiveness (cost/benefit).
- Keep proposed treatments visible through project selection and deployment.
- Amass information that will support treatment and program effectiveness.



OnSafety™ STM is centered around the management, organization, manipulation, analysis and presentation of:

- Safety Locations
- Treatment Locations
- Treatment Library

OnSafety™ STM is fully data driven; the information it integrates for safety treatment management is limited only by the data you have available.

Figure 1: Safety Locations, Crash Data, and Treatment Locations

Users are enabled to perform analysis of treatment cost from a site perspective, or from a treatment perspective.

The Safety Location Dashboard performs as a central hub for prioritizing locations to analyze for potential safety treatments.



Figure 2: Safety Locations, Treatment Locations, and Treatment Library

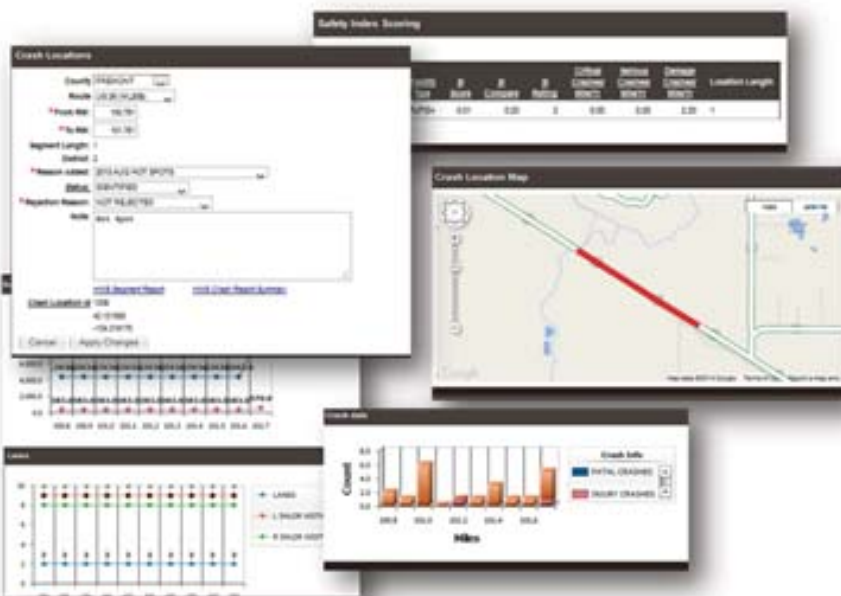


Figure 3: Safety Location Dashboard

The Treatment Location Dashboard performs as a central hub for performing economic analysis of the proposed treatment(s) for the location. It provides the ability to locate treatments, compute benefit to cost for applied to the site, and track status of the treatment.

The Treatment Location Dashboard provides the ability to locate treatments, compute benefit to cost for applied to the site, and track status of the treatment.

STM supports compliance with MAP-21 directions.

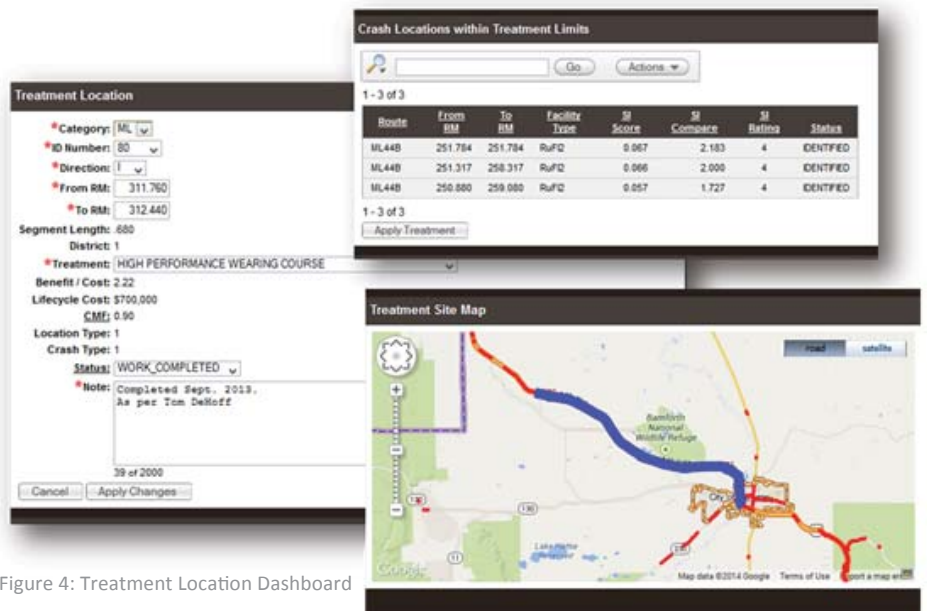


Figure 4: Treatment Location Dashboard