

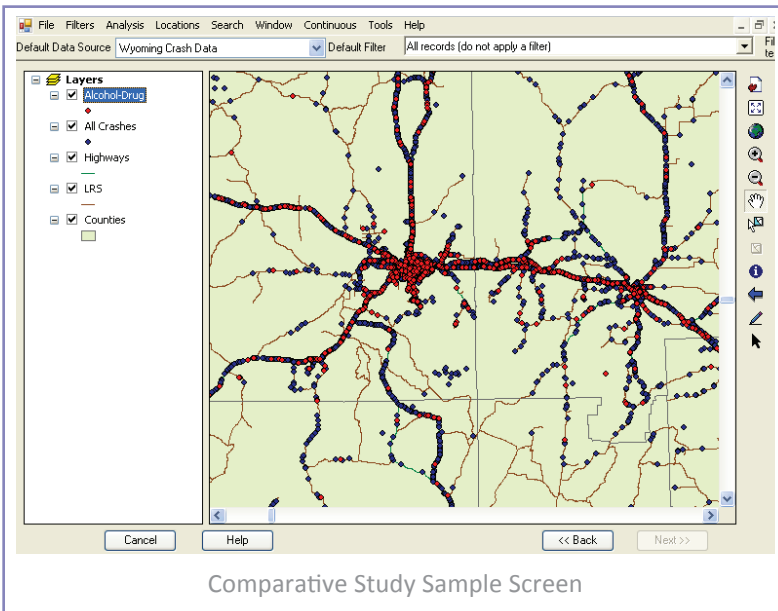


Crash Analysis Application

DISPLAY RAPID SUMMARIES OF YOUR TRANSPORTATION DATA

→ Take Advantage of Powerful Visualization and Mapping Tools

The OnSafety™ Integrated Solution contains the CARE System, which contains a suite of technical data-visualization and analysis widgets. All of the visualization and analysis widgets are contained within a single web application framework. The CARE System is fully integrated with the Internet-based WebViewer component.



CARE allows agencies to combine several sources of pertinent data into a single rapid-access, read-only data warehouse. Once appropriate datasets have been extracted from the warehouse, users have the ability to perform a number of complex statistical analyses including:

- Frequency distributions
- Cross tabulations
- Maximum gain calculations
- Evaluations of over-and-under representations
- Comparisons and correlations
- Strip-maps and hotspot determinations

CARE 9.0.0.4 - [Crosstab - Wyoming Crash Data - C008: Day of the Week vs. C004: Month - Filter = Alcohol Involved]

Default Data Source: Wyoming Crash Data | Default Filter: Alcohol Involved | Filter Logic - C018: Alcohol Involved? = Cra

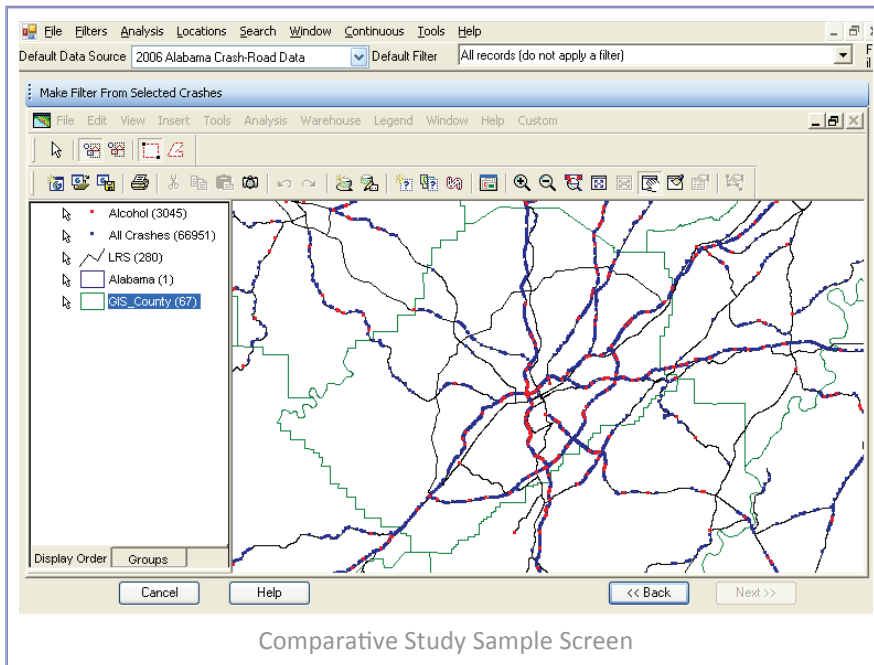
	Sunday	Monday	Tuesday	Wednesday	Thursday	Friday	Saturday	TOTAL
January	178 7.48%	108 8.82%	122 9.08%	121 8.50%	142 9.08%	157 7.00%	229 7.78%	1057 8.06%
February	167 7.02%	77 6.29%	99 7.37%	92 6.46%	102 6.52%	175 7.80%	202 6.86%	914 6.97%
March	195 8.20%	87 7.11%	102 7.59%	104 7.30%	126 8.06%	170 7.58%	234 7.95%	1018 7.76%
April	185 7.78%	99 8.09%	80 5.96%	97 6.81%	116 7.42%	158 7.04%	216 7.34%	951 7.25%
May	209 8.79%	127 10.38%	112 8.34%	119 8.36%	141 9.02%	194 8.65%	261 8.87%	1163 8.86%
June	214 9.00%	89 7.27%	111 8.27%	116 8.15%	121 7.74%	177 7.89%	245 8.32%	1073 8.18%
July	238 10.00%	123 10.05%	116 8.64%	158 11.10%	134 8.57%	205 9.14%	299 10.16%	1273 9.70%
August	232 9.75%	108 8.82%	119 8.86%	149 10.46%	151 9.65%	204 9.09%	274 9.31%	1237 9.43%
September	207 8.70%	120 9.80%	133 9.90%	99 6.95%	141 9.02%	204 9.09%	267 9.07%	1171 8.93%
October	211 8.87%	96 7.84%	123 9.16%	111 7.79%	137 8.76%	187 8.34%	260 8.83%	1125 8.57%
November	174 7.31%	98 8.01%	107 7.97%	127 8.92%	127 8.12%	185 8.25%	215 7.31%	1033 7.87%
December	169 7.10%	92 7.52%	119 8.86%	131 9.20%	126 8.06%	227 10.12%	241 8.19%	1105 8.42%
TOTAL	2379 18.13%	1224 9.33%	1343 10.24%	1424 10.85%	1564 11.92%	2243 17.10%	2943 22.43%	13120 100.00%

Cross Tabulation Sample Screen

SHOW MEANINGFUL EASY TO COMPREHEND REPRESENTATIONS OF COMPLEX DATA

→ *The Application is integrated with GIS, but does not require users to be GIS experts.*

To minimize user frustration, the application employs a “wizard” approach to building queries and generating GIS displays. This solution has a proven success record of combining and comparing datasets for primary crash records, roadway features, traffic counts, LRS locations, and other smaller data sets. Analysis functions include:



Mapping – Integrates spatial and location data with a number of web-based mapping systems (Google, Yahoo, Virtual Earth, etc.).

Graphing/Charting – Visualize summary data in bar charts, pie charts, tables, and others.

Frequency Analysis – Select any variable and return the frequency of each data value.

Cross-Tabulations – Combine any two variables and return the data frequencies between the two.

